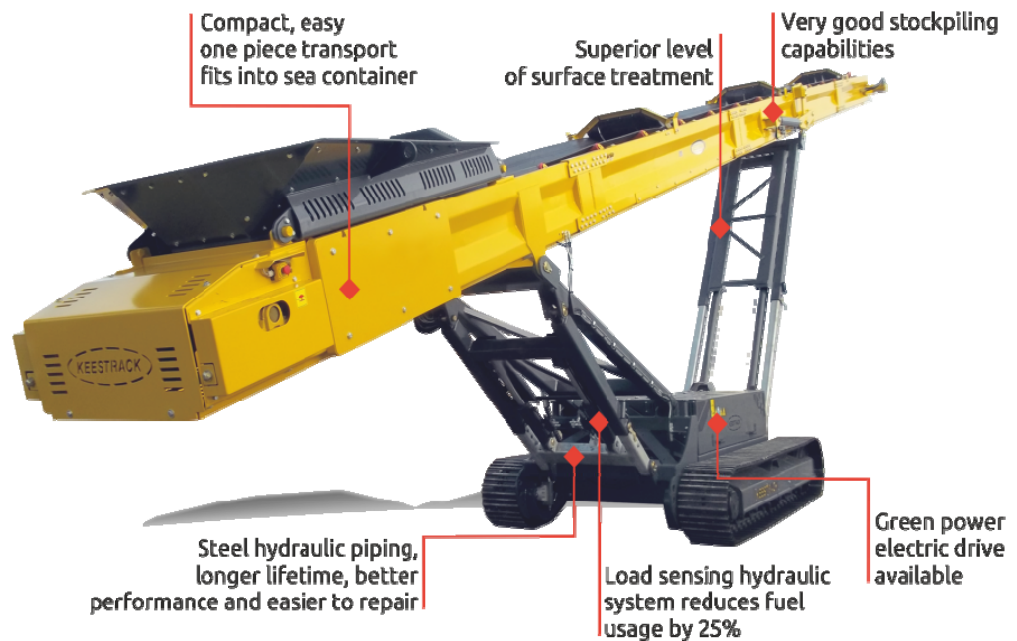


S3 Stacker



Performance highlights

- Very good stockpiling capabilities
- 75% cost saving capacity compared to a loading shovel
- Main conveyor 800 mm (31") wide, 18 meter (59') long
- Feed capacity up to 250 tons an hour
- Available in full hybrid version
- Stockpile capacity from 1.200 tons to 7.500 tons
- Discharge height from 6,7 meter (22') to 7,8 meter (25')
- Available in Diesel/Hydraulic drive, Diesel/Electric drive

Specifications

Transport Dimensions

Weight:	10,3 t (11sT)
Length:	11.900 mm (39')
Height:	2.330 mm (7'8")
Width:	2.290 mm (7'7")