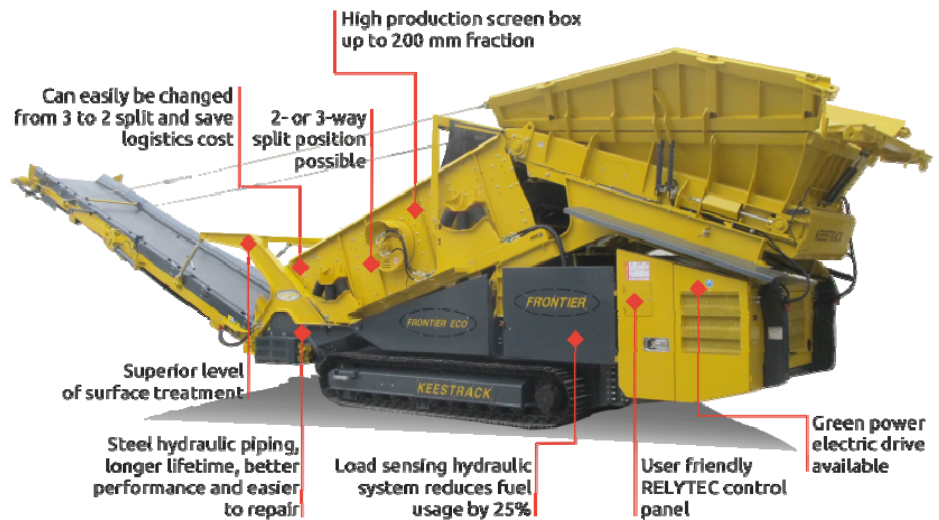


K7e Screen



Performance highlights

- Available in full hybrid version
- High production screen box, upper deck screening fraction up to 200 mm
- Capacity up to 1.000 tonnes / hour
- Electric, energy saving, full hybrid version
- Feed hopper 8 m³ (10 yard³), several hopper extensions available
- Large range of screen meshes, fingers, punched plate, grizzly & rubber decks available
- 2 speed track drive
- Extensive option list to configure to your application

Specifications

	Transport Dimensions	Transport Dimensions
Weight:	37,5 t (41 sT)	
Length:	14.850 mm (48'7")	15.400mm (50'6")
Height:	3.270 mm (10'9")	3.700mm (12'2")
Width:	3.000 mm (9'10")	14.400mm (47'3")